



MINISTRY OF HIGHER EDUCATION

JPT | DEPARTMENT
OF HIGHER
EDUCATION

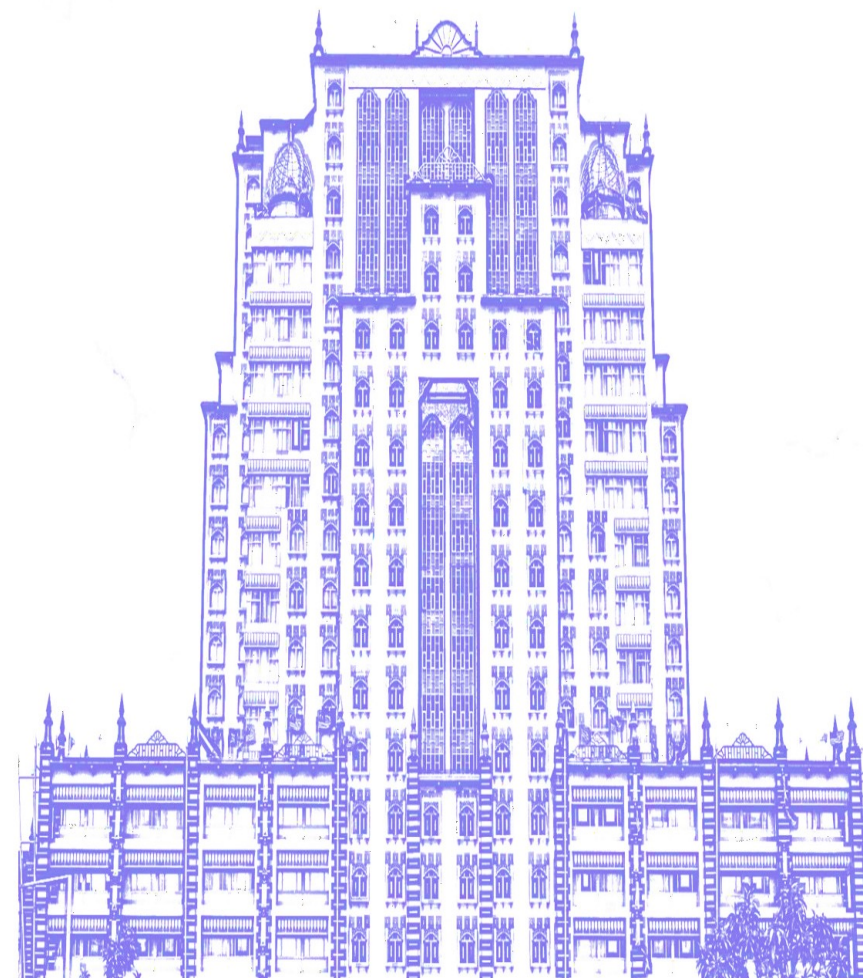
The Role for Governments In Driving Forward Equitable Access and Success In Higher Education

17 November 2021

**Associate Professor Dr. Wan Zuhainis Saad
Director**

**Academic Excellence Division
Department of Higher Education
Ministry Of Higher Education Malaysia**

**WORLD ACCESS TO HIGHER EDUCATION DAY (WAHED)
ONLINE CONFERENCE**



MALAYSIAN HIGHER EDUCATION INSTITUTIONS LANDSCAPE

**Students
Enrollment
1,162,590**

595
Higher
Education
Institutions
under MoHE

Current International Students:
92,300 (As of June 2021)



20 Public Universities
555,340 students



435 HEIs
507,932 students



36 Polytechnics
84,578 students



104 Community Colleges
14,740 students

Data as of 30 June 2021

MALAYSIA COMMITMENTS

System aspirations



Access



Quality



Equity



Unity



Efficiency

Student aspirations



Ethics &
Spirituality



Leadership
Skills



National
Identity



Language
Proficiency



Thinking
Skills



Knowledge

AKHLAK
(Ethics and Morality)

BALANCE

ILMU
(Knowledge and Skills)



Malaysia Higher Education Blueprint (HE) 2015-2025

MALAYSIA – SUPPORTING EQUITABLE ACCESS TO HIGHER EDUCATION

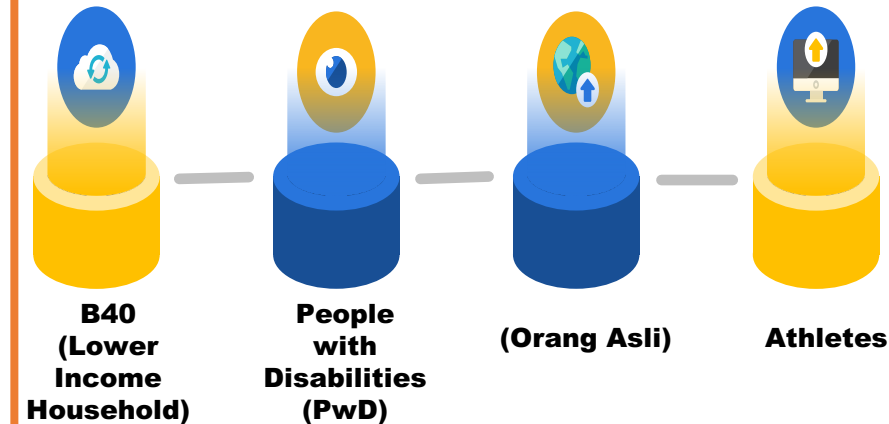
Malaysia aims,

All Malaysians could
fulfill their potential
regardless of location,
gender, or socio-
economic background



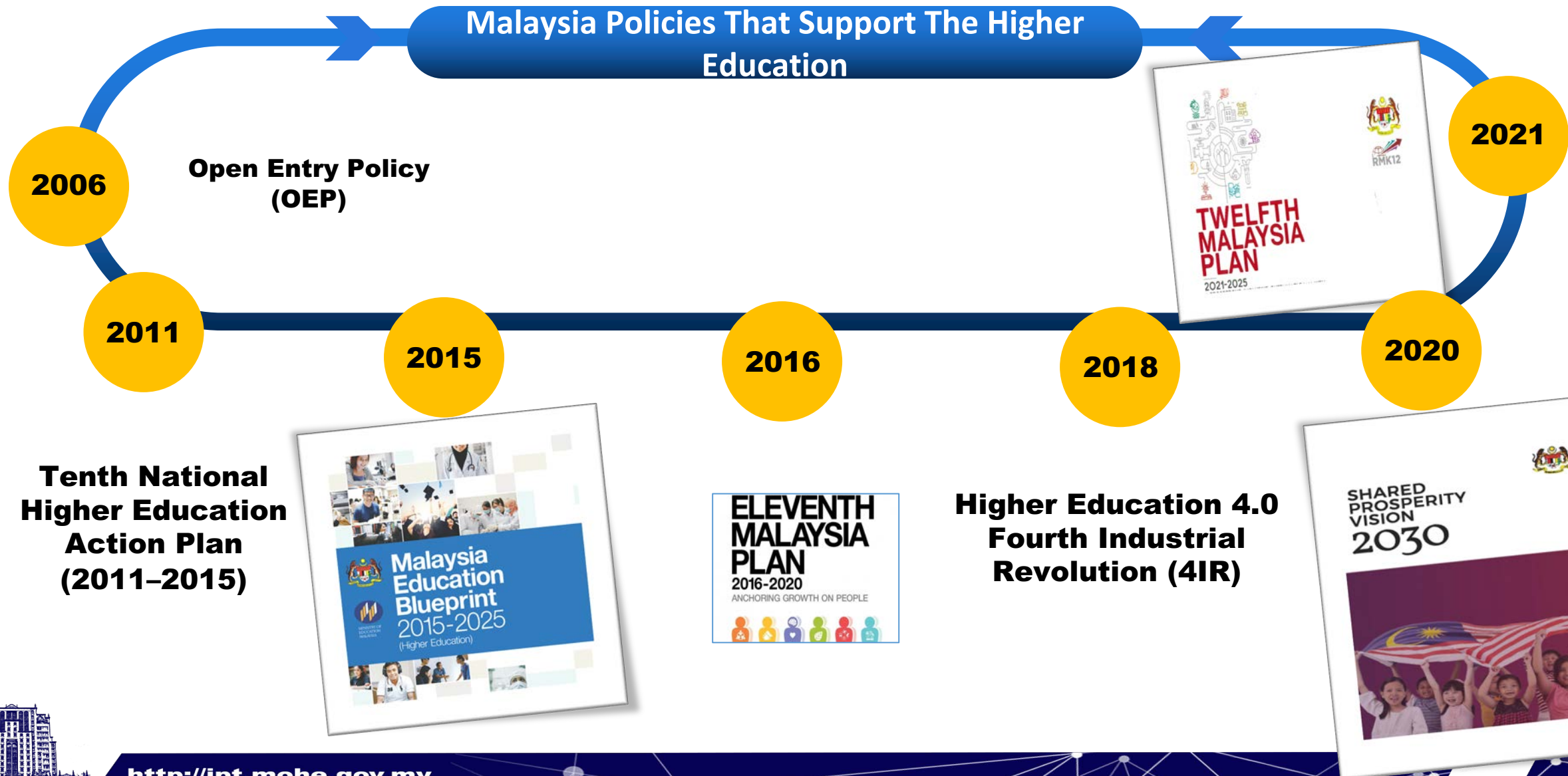
Ministry of Higher Education,
Malaysia,

- ❖ recognize the importance of providing equitable access to education opportunities for special need due to disabilities
- ❖ Provide inclusive pathway for targeted groups on admission to Higher Education Institutions
- ❖ Provide financial assistance for pursuing higher education



Does not have to compete with
mainstream group

Alternative Admission and Study Pathways To Higher Education



Where are we now?

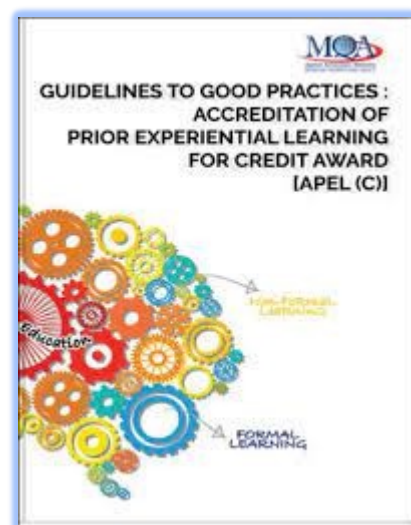
Enhancing the implementation of national policies on lifelong Learning instruments and institutional practices to be benefited by non-traditional learners and equity groups

Accreditation of Prior Experiential Learning (APEL)

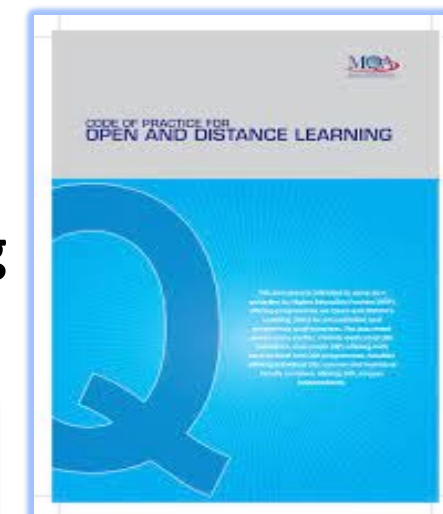
APEL for access (APEL.A)

APEL for credit award (APEL.C)

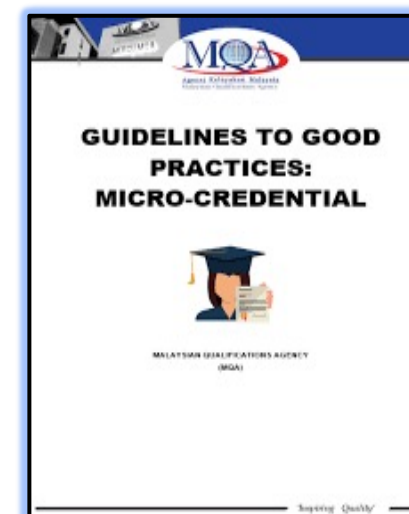
APEL for award academic qualifications (APEL.Q)



Open and Distance Learning



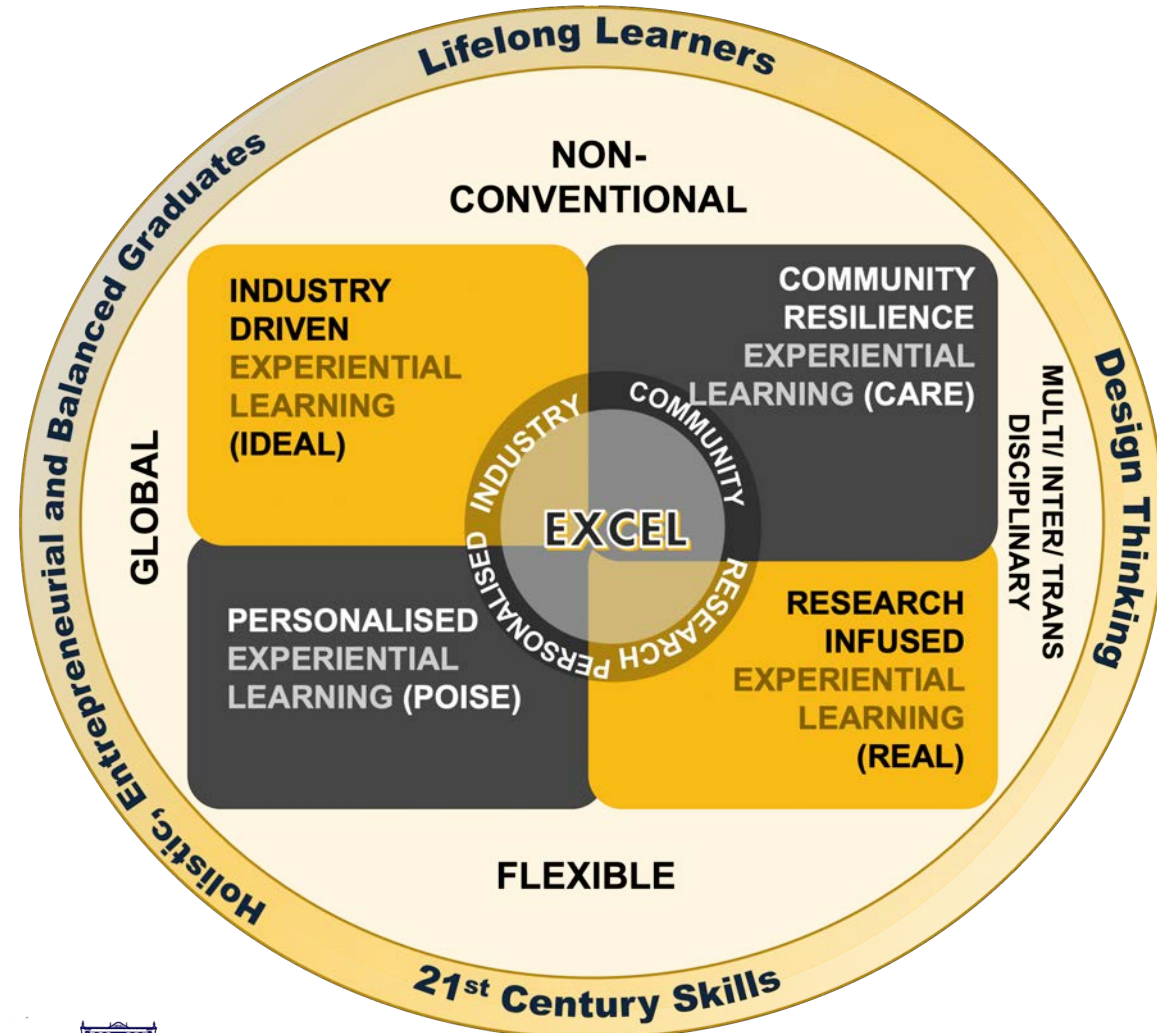
Micro credentials



Experiential Learning and Competency-Based Education Landscape (EXCEL)

Resilient and Change Ready Talent

10C's



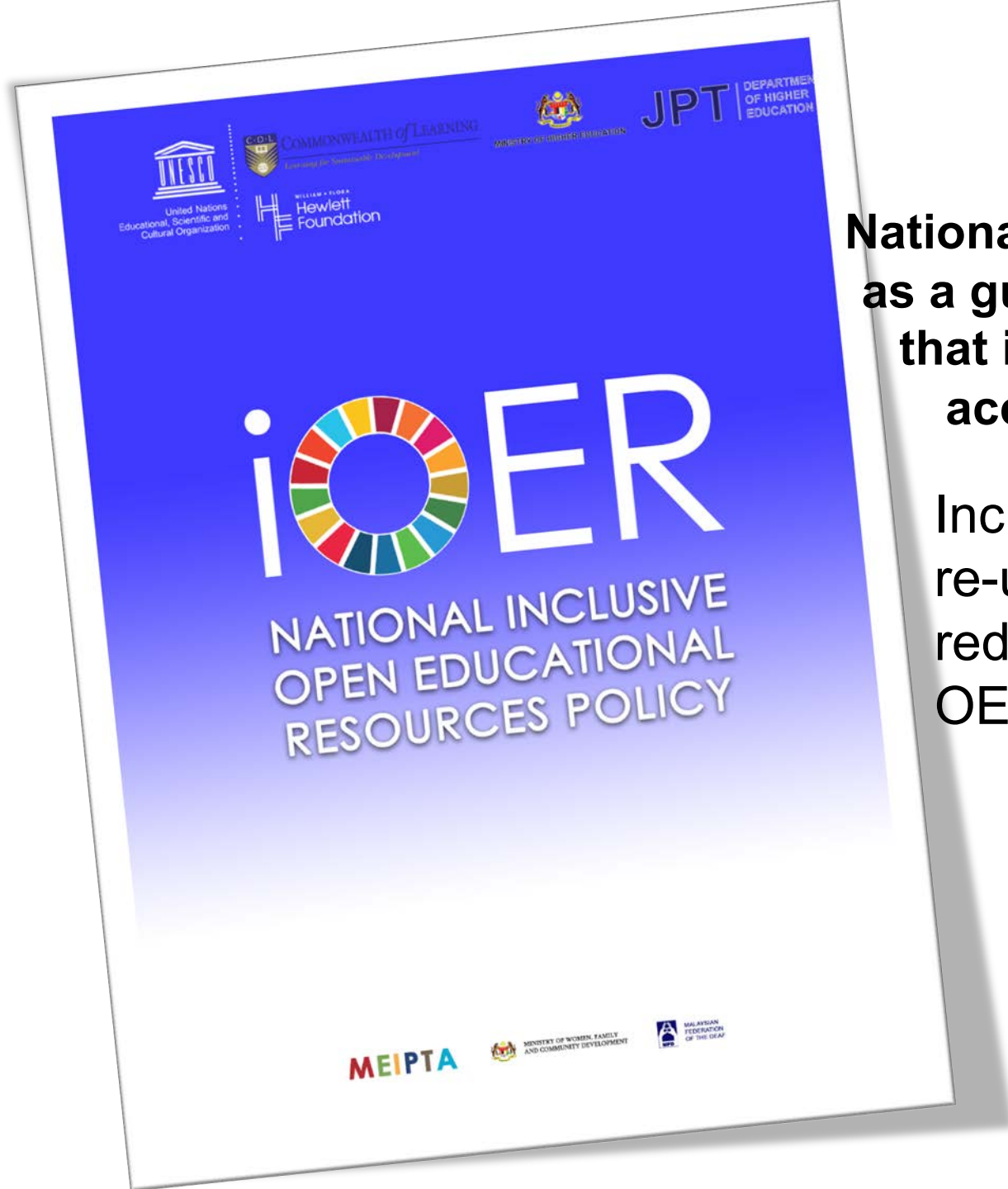
- Communication
- Critical Thinking
- Creative, Innovative, Entrepreneurial Skills
- Computational Thinking & ICT Literacy
- Complex Problem Solving
- Collaboration and Leadership
- Cognitive and Affective Flexibility
- Cross-cultural and Global Learning Skills
- Career and Learning Self-Reliance
- Coping and Well-being Skills



National iOER Policy is a general policy that serves as a guideline for an institution in developing OER that include individuals with disabilities to gain access for teaching and learning materials.

Inclusive OER refers to the creation, access, re-use, re-purpose, adaptation and redistribution of inclusive and equitable quality OER for all stakeholders.

In aligning with the objectives of UNESCO's efforts on establishing inclusive OER, this policy is an initiative to drive the national OER agenda towards supporting Sustainable Development Goals.



The background of the slide is a dense, repeating pattern of stylized hands in various colors (red, yellow, green, blue, purple, orange) reaching upwards. The hands are of different sizes and orientations, creating a sense of collective effort and diversity.

THANK YOU